

H2Teesside Project

Planning Inspectorate Reference: EN070009

Land within the boroughs of Redcar and Cleveland and Stockton-on-Tees, Teesside and within the borough of Hartlepool, County Durham

Document Reference: 8.54 Sembcorp Protection Corridor Plans without Cowpen Bewley Arm

Planning Act 2008



Applicant: H2 Teesside Ltd


Date: February 2025

Rev:

DOCUMENT HISTORY

DOCUMENT REF	8.54		
REVISION	0a		
AUTHOR	bp		
SIGNED	bp	DATE	24.02.25
APPROVED BY	bp		
SIGNED	bp	DATE	24.02.25





**DALCOUR
MACLAREN**

Key:

Order Limits

Wilton Complex

Sembcorp Protection Corridor

Notes:

Coordinate System: British National Grid
Projection: Transverse Mercator
Datum: OSGB 1936

Interest:
N/A

Location:
Billingham, Stockton-on-Tees, Tees Valley, TS2 1TT

Coords: 453315, 522301

Scheme Name:
H2Teesside

Drawing Name:
Information Plan

Drawing No: 22004379_PLN_INFO_548.1


Rev	Date	Description
-	24.02.2025	First Issue


Drawn: AL

Approved: PH

Sheet No: 1 of 1

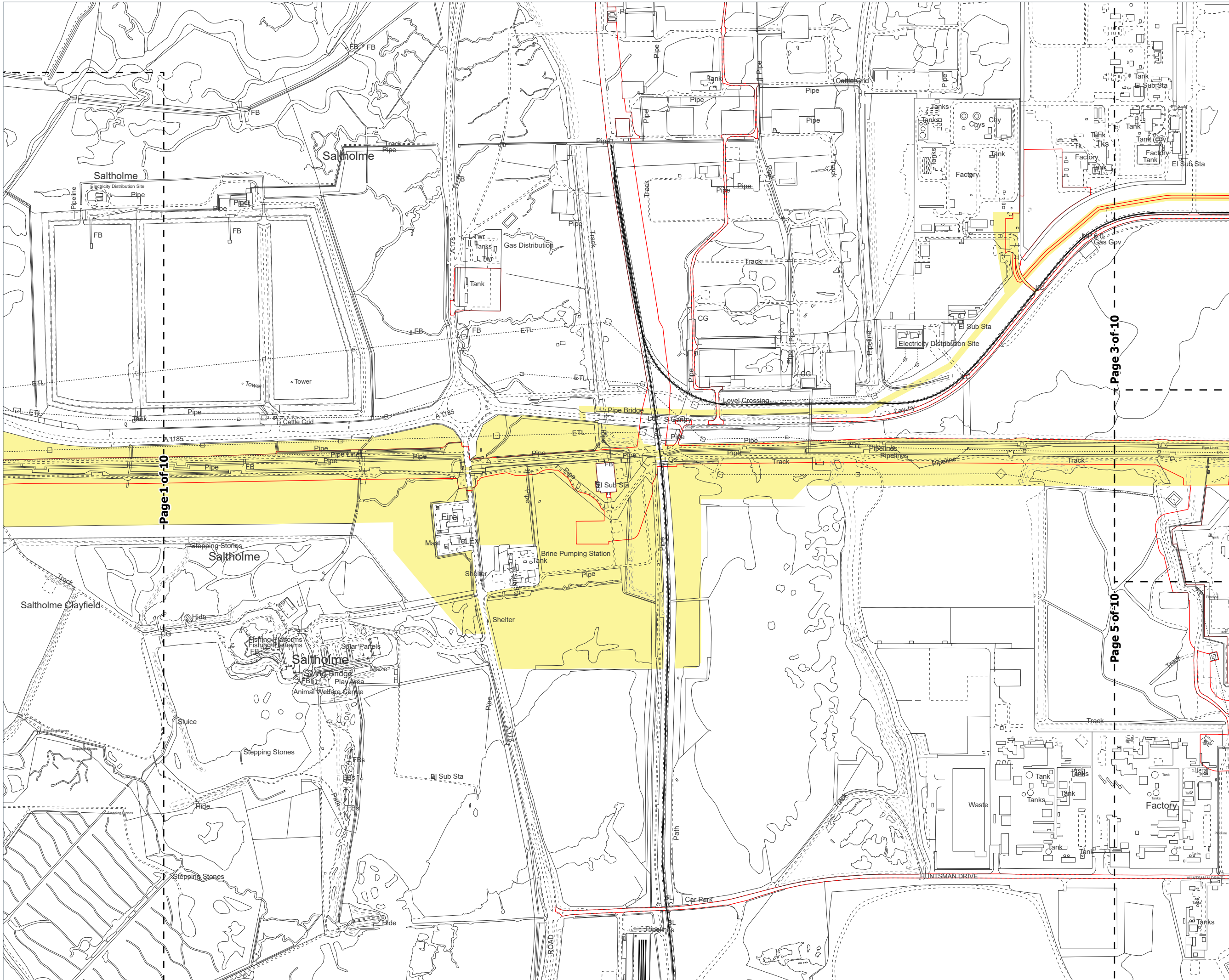
Sheet Size: A1





The information contained in this document is confidential and protected by copyright. The use, copying or disclosure to a third party, either wholly or in part, except with the written permission of, and in the manner prescribed by BP Exploration Company Operating Limited constitutes an infringement of copyright. Dalcour Maclaren does not warrant that this document is definitive nor free of error and does not accept liability for any loss caused or arising from reliance upon information provided herein. Although our best efforts have been made to ensure the accuracy of these plans, all measurements must be confirmed on site. BASED UPON THE ORDNANCE SURVEY MAP WITH THE SANCTION OF THE CONTROLLER OF HM STATIONERY OFFICE. CROWN COPYRIGHT RESERVED. © OS LICENCE No. AC0000808122

Drawing Location: C:\Users\andrew.lambe\Documents\22004379 - Geomatics\01 DM Plans\2025\220_22004379_PLN_INFO_548.aprx



- Key:
- Sembcorp Protection Corridor
 - Order Limits
 - Wilton Complex

Notes:

Coordinate System: British National Grid
Projection: Transverse Mercator
Datum: OSGB 1936

Interest:
N/A

Location:
Billingham, Stockton-on-Tees, Tees Valley,
TS2 1TT

Coords: 450982, 523508

Scheme Name:
H2 Teesside

Drawing Name:
Information Plan

Drawing No: 22004379_PLN_INFO_549.2

Rev	Date	Description
-	24.02.2025	First Issue

Drawn:	AL
Approved:	PH
Sheet No:	2 of 10
Sheet Size:	A3



The information contained in this document is confidential and protected by copyright. The use, copying or disclosure to a third party, either wholly or in part, except with the written permission of, and in the manner prescribed by BP Exploration Operating Company Limited constitutes an infringement of copyright. Dalcour Maclaren does not warrant that this document is definitive nor free of error and does not accept liability for any loss caused or arising from reliance upon information provided herein. Although our best efforts have been made to ensure the accuracy of these plans, all measurements must be confirmed on site. BASED UPON THE ORDINANCE SURVEY MAP WITH THE SANCTION OF THE CONTROLLER OF HM STATIONERY OFFICE. CROWN COPYRIGHT RESERVED. © OS LICENCE No. AC0000808122

Coordinate System: British National Grid
Projection: Transverse Mercator
Datum: OSGB 1936

Location:
Billingham, Stockton-on-Tees, Tees Valley,
TS2 1TT

Scheme Name:
H2 Teesside

Drawing Name:
Information Plan

Drawing No: 22004379 PLN INFO 549.3

Rev	Date	Description
-	24.02.2025	First Issue

Drawn:	AL
--------	----

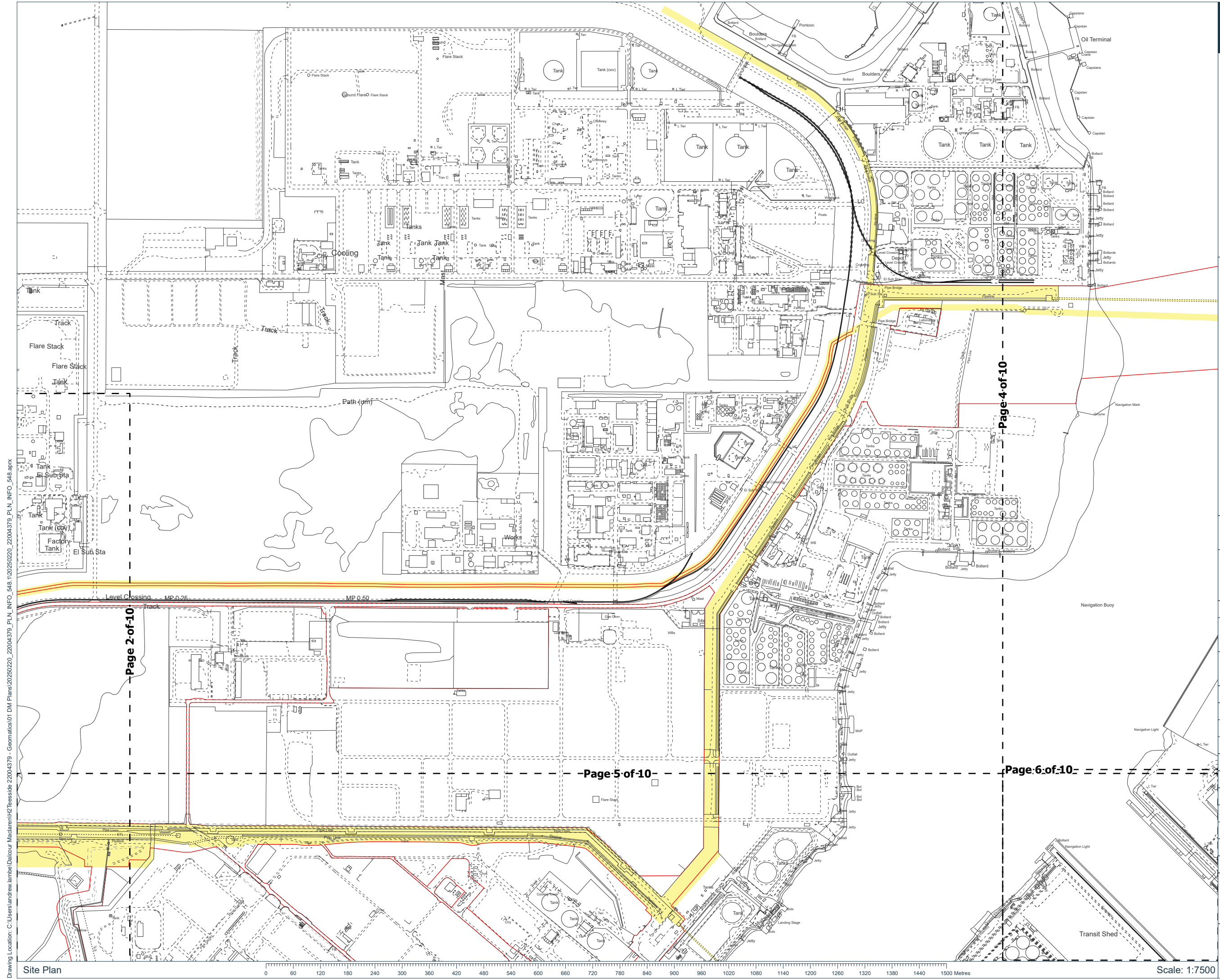
Approved:	PH
-----------	----

Sheet No: 3 of 10

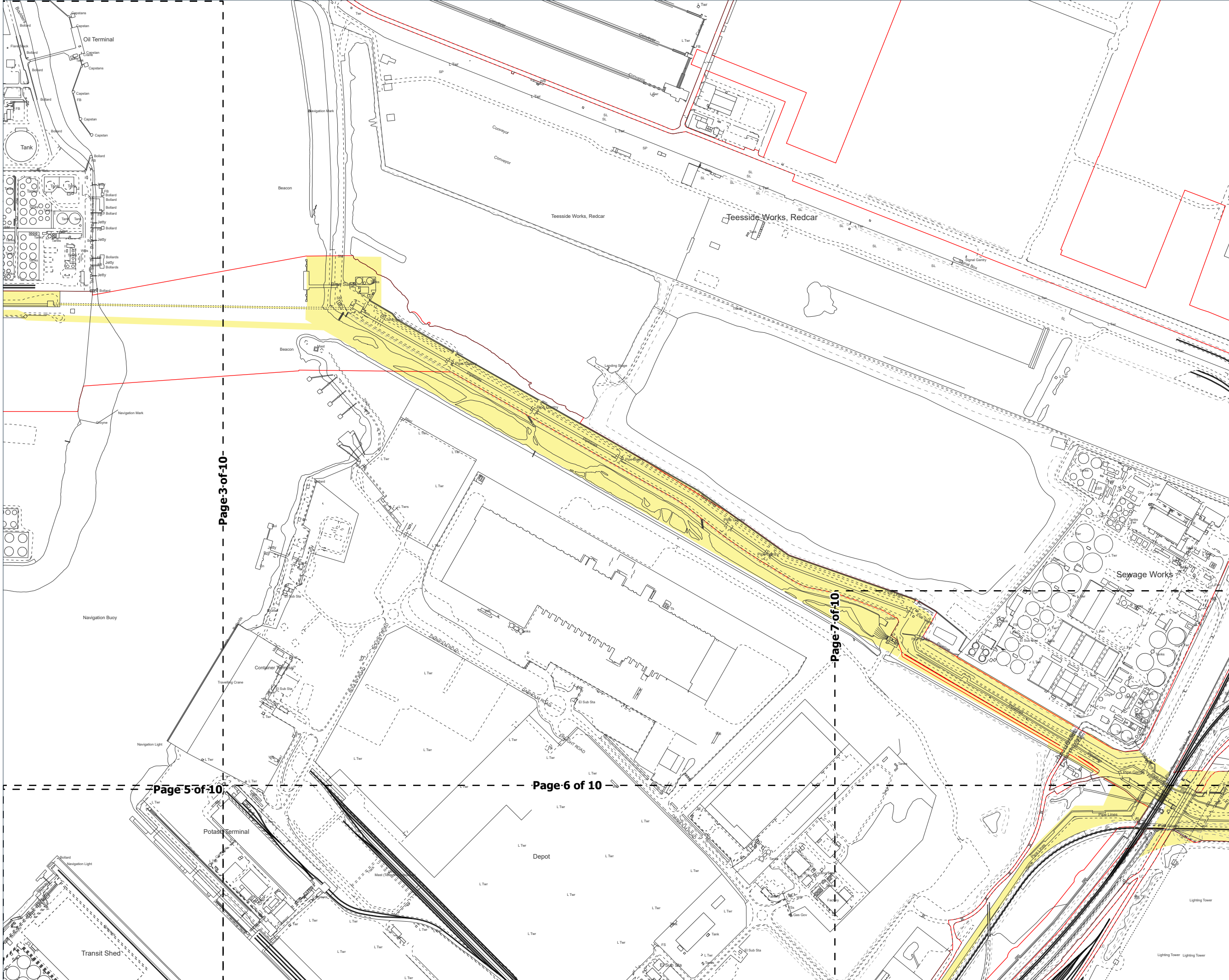
Sheet Size:	A3
-------------	----



The information contained in this document is confidential and protected by copyright. The use, copying or disclosure to a third party, either wholly or in part, except with the written permission of, and in the manner prescribed by BP Exploration Operating Company Limited constitutes an infringement of copyright. Dalcor MacLaren does not warrant that this document is definitive, or that it is not subject to change without notice. The information is provided for your information provided herein. Although our best efforts have been made to ensure the accuracy of these plans, all measurements must be confirmed on site. BASED UPON THE ORDNANCE SURVEY MAP WITH THE SANCTION OF THE CONTROLLER OF HM STATIONERY OFFICE. CROWN COPYRIGHT RESERVED. © OS LICENCE No. AC00000808122



Drawing Location: C:\Users\andrew.lambe\Documents\22004379 - Geomatics\01 DM Plans\22004379_PLN_INFO_548.aprx



- Key:
- Sembcorp Protection Corridor
 - Order Limits
 - Wilton Complex

Notes:

Coordinate System: British National Grid
Projection: Transverse Mercator
Datum: OSGB 1936

Interest:
N/A

Location:
Billingham, Stockton-on-Tees, Tees Valley,
TS2 1TT

Coords: 455554, 524374

Scheme Name:
H2 Teesside

Drawing Name:
Information Plan

Drawing No: 22004379_PLN_INFO_549.4

Rev	Date	Description
-	24.02.2025	First Issue

Drawn: AL

Approved: PH

Sheet No: 4 of 10

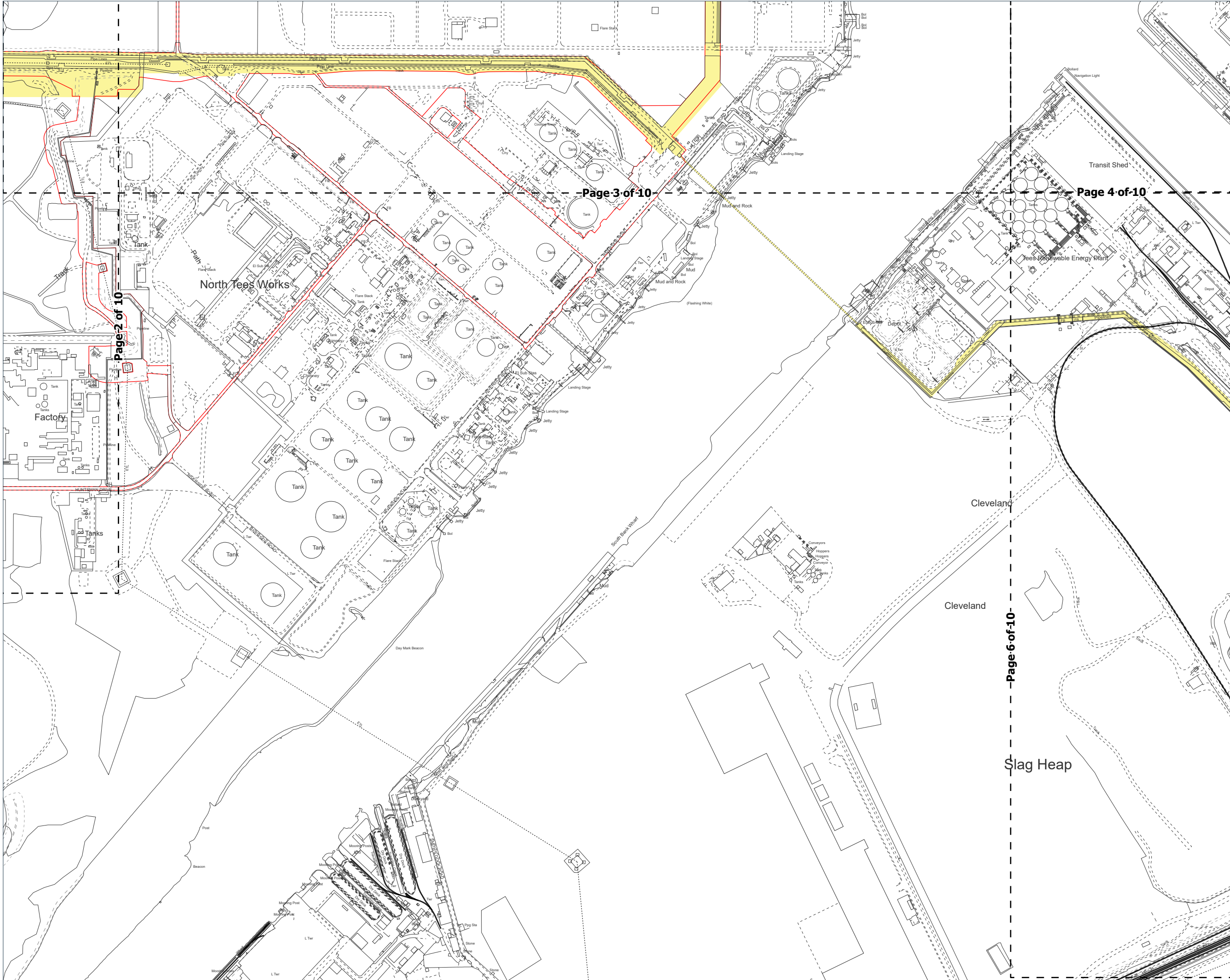
Sheet Size: A3



The information contained in this document is confidential and protected by copyright. The use, copying or disclosure to a third party, either wholly or in part, except with the written permission of, and in the manner prescribed by BP Exploration Operating Company Limited constitutes an infringement of copyright. Dalcour Maclaren does not warrant that this document is definitive nor free of error and does not accept liability for any loss caused or arising from reliance upon information provided herein. Although our best efforts have been made to ensure the accuracy of these plans, all measurements must be confirmed on site. BASED UPON THE ORDNANCE SURVEY MAP WITH THE SANCTION OF THE CONTROLLER OF HM STATIONERY OFFICE. CROWN COPYRIGHT RESERVED. © OS LICENCE No. AC0000808122

Scale: 1:7500

Drawing Location: C:\Users\andrew.lambe\Documents\H2 Teesside\22004379_PLN_INFO_548.aprx
Drawing: 22004379_PLN_INFO_548.aprx
Geomatics\01 DM Plans\2025\220_22004379_PLN_INFO_548.aprx



- Key:
- Sembcorp Protection Corridor
 - Order Limits
 - Wilton Complex

Notes:

Coordinate System: British National Grid
Projection: Transverse Mercator
Datum: OSGB 1936

Interest:
N/A

Location:
Billingham, Stockton-on-Tees, Tees Valley,
TS2 1TT

Coords: 453381, 522671

Scheme Name:
H2 Teesside

Drawing Name:
Information Plan

Drawing No: 22004379_PLN_INFO_549.5

Rev	Date	Description
-	24.02.2025	First Issue

Drawn:	AL
Approved:	PH
Sheet No:	5 of 10
Sheet Size:	A3



The information contained in this document is confidential and protected by copyright. The use, copying or disclosure to a third party, either wholly or in part, except with the written permission of, and in the manner prescribed by BP Exploration Operating Company Limited constitutes an infringement of copyright. Dalcour Maclaren does not warrant that this document is definitive nor free of error and does not accept liability for any loss caused or arising from reliance upon information provided herein. Although our best efforts have been made to ensure the accuracy of these plans, all measurements must be confirmed on site. BASED UPON THE ORDINANCE SURVEY MAP WITH THE SANCTION OF THE CONTROLLER OF HM STATIONERY OFFICE. CROWN COPYRIGHT RESERVED. © OS LICENCE No. AC0000808122

Coordinate System: British National Grid
Projection: Transverse Mercator
Datum: OSGB 1936

Location:
Billingham, Stockton-on-Tees, Tees Valley,
TS2 1TT

Scheme Name:
H2 Teesside

Drawing Name:
Information Plan

Drawing No: 22004379 PLN INFO 549.6

Rev	Date	Description
-	24.02.2025	First Issue

Drawn:	AL
--------	----

Approved:	PH
-----------	----

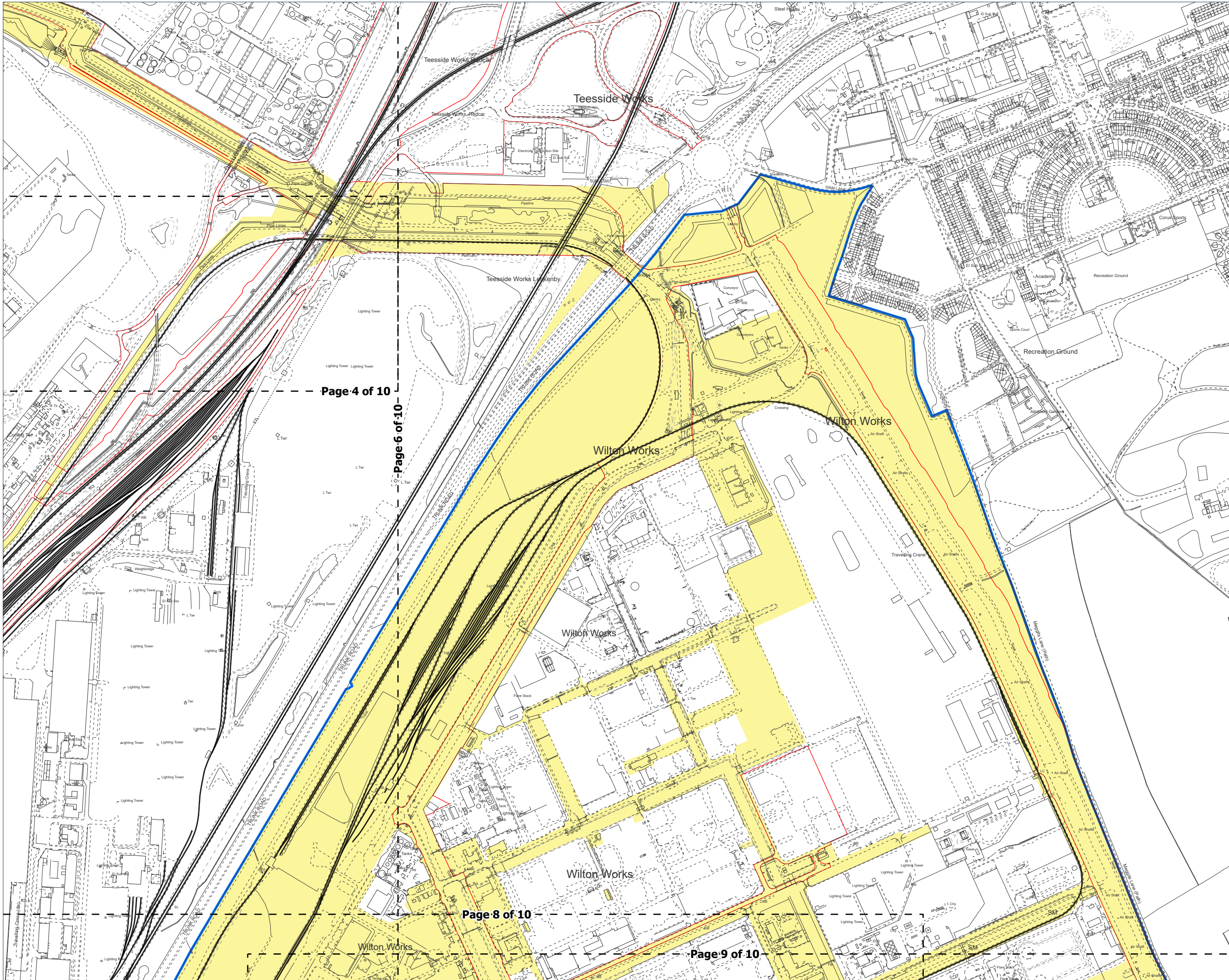
Sheet No: 6 of 10

Sheet Size:	A3
-------------	----



The information contained in this document is confidential and protected by copyright. The use, copying or disclosure to a third party, either wholly or in part, except with the written permission of, and in the manner prescribed by BP Exploration Operating Company Limited constitutes an infringement of copyright. Dalcour MacLaren does not warrant that this document is definitive nor free of error and does not accept liability for any loss caused or arising from reliance upon information provided herein. Although our best efforts have been made to ensure the accuracy of these plans, all measurements must be confirmed on site. BASED UPON THE ORDNANCE SURVEY MAP WITH THE SANCTION OF THE CONTROLLER OF HM STATIONERY OFFICE. CROWN COPYRIGHT RESERVED. © OS LICENCE No. AC00080808

Drawing Location: C:\Users\andrew.lambe\Documents\22004379_PLN_INFO_548.aprx
Geomatics\01 DM Plans\2020\22004379_PLN_INFO_548.aprx



- Key:
- Semcorp Protection Corridor
 - Order Limits
 - Wilton Complex

Notes:

Coordinate System: British National Grid
Projection: Transverse Mercator
Datum: OSGB 1936

Interest:
N/A

Location:
Billingham, Stockton-on-Tees, Tees Valley,
TS2 1TT

Coords: 457349, 523099

Scheme Name:
H2 Teesside

Drawing Name:
Information Plan

Drawing No: 22004379_PLN_INFO_549.7

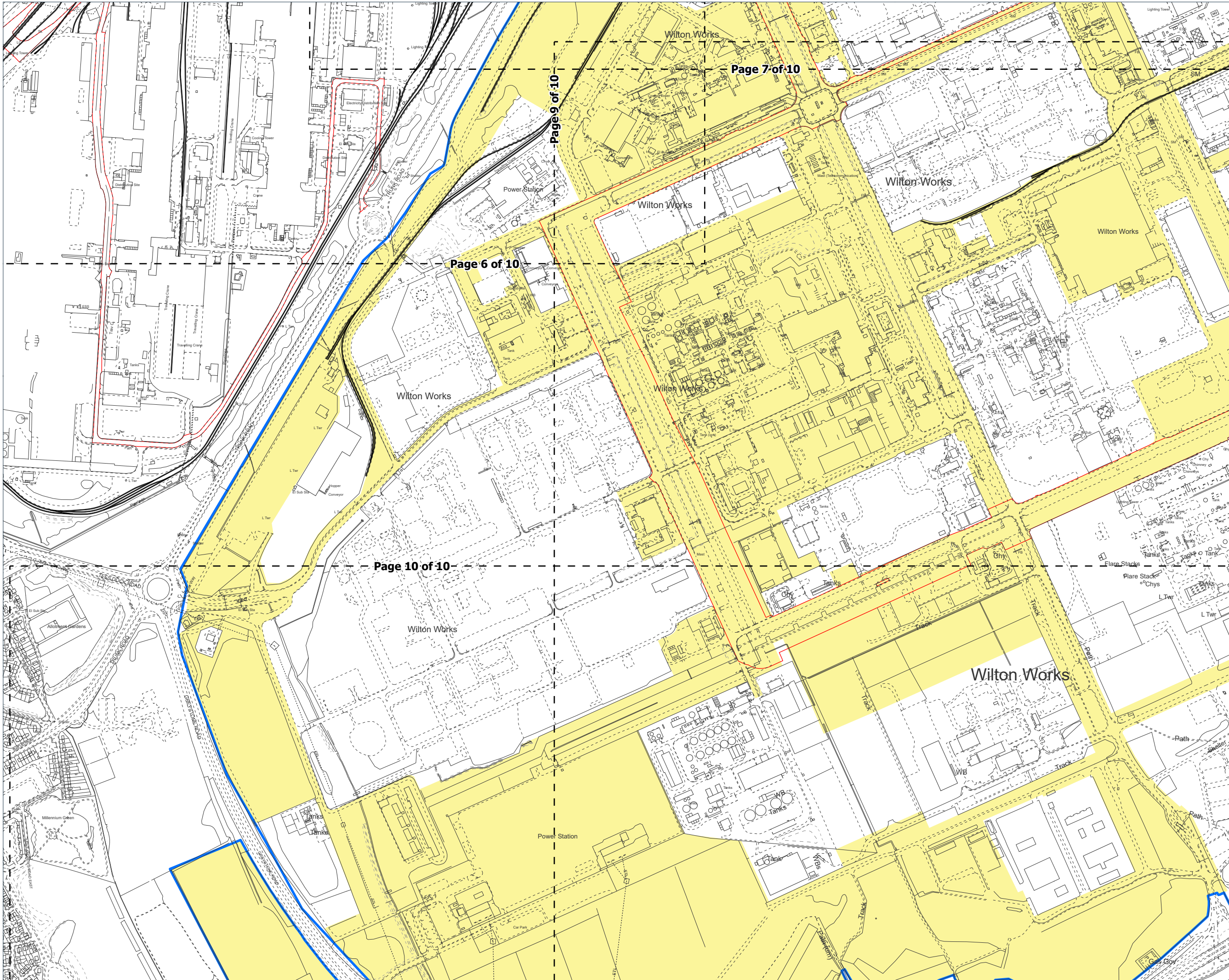
Rev	Date	Description
-	24.02.2025	First Issue

Drawn:	AL	
Approved:	PH	
Sheet No:	7 of 10	
Sheet Size:	A3	



The information contained in this document is confidential and protected by copyright. The use, copying or disclosure to a third party, either wholly or in part, except with the written permission of, and in the manner prescribed by BP Exploration Operating Company Limited constitutes an infringement of copyright. Dalcour Maclaren does not warrant that this document is definitive nor free of error and does not accept liability for any loss caused or arising from reliance upon information provided herein. Although our best efforts have been made to ensure the accuracy of these plans, all measurements must be confirmed on site. BASED UPON THE ORDNANCE SURVEY MAP WITH THE SANCTION OF THE CONTROLLER OF HM STATIONERY OFFICE. CROWN COPYRIGHT RESERVED. © OS LICENCE No. AC0000808122

Drawing Location: C:\Users\andrew.lambe\Documents\H2 Teesside\22004379 - Geomatics\01 DM Plans\20250220_22004379_PLN_INFO_548.aprx



- Key:
- Semcorp Protection Corridor
 - Order Limits
 - Wilton Complex

Notes:

Coordinate System: British National Grid
Projection: Transverse Mercator
Datum: OSGB 1936

Interest:
N/A

Location:
Billingham, Stockton-on-Tees, Tees Valley,
TS2 1TT

Coords: 456687, 521130

Scheme Name:
H2 Teesside

Drawing Name:
Information Plan

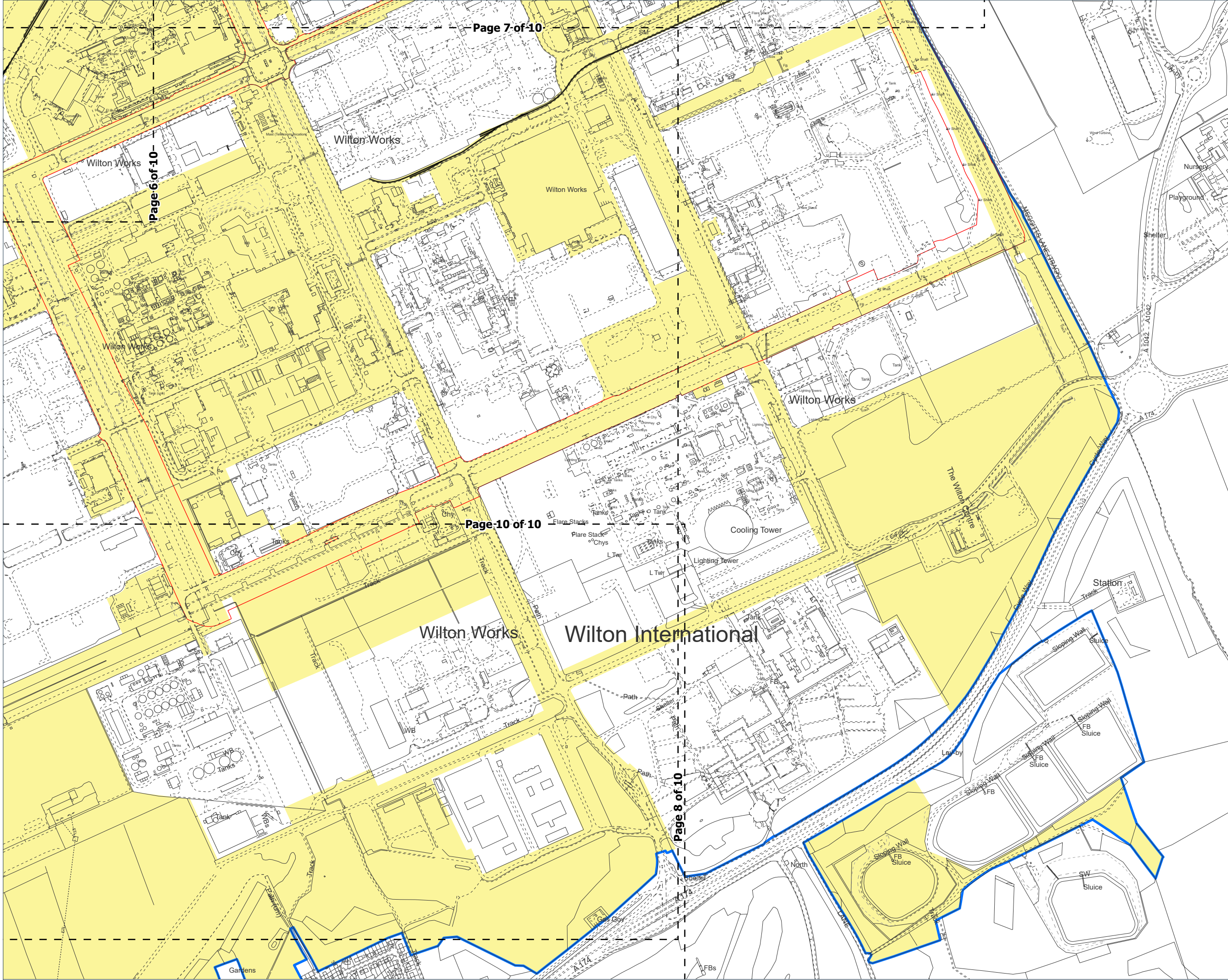
Drawing No: 22004379_PLN_INFO_549.8

Rev	Date	Description
-	24.02.2025	First Issue

Drawn:	AL	
Approved:	PH	
Sheet No:	8 of 10	
Sheet Size:	A3	



The information contained in this document is confidential and protected by copyright. The use, copying or disclosure to a third party, either wholly or in part, except with the written permission of, and in the manner prescribed by BP Exploration Operating Company Limited constitutes an infringement of copyright. Dalcour Maclaren does not warrant that this document is definitive nor free of error and does not accept liability for any loss caused or arising from reliance upon information provided herein. Although our best efforts have been made to ensure the accuracy of these plans, all measurements must be confirmed on site. BASED UPON THE ORDNANCE SURVEY MAP WITH THE SANCTION OF THE CONTROLLER OF HM STATIONERY OFFICE. CROWN COPYRIGHT RESERVED. © OS LICENCE No. AC0000808122



- Key:
- Sembcorp Protection Corridor
 - Order Limits
 - Wilton Complex

Notes:

Coordinate System: British National Grid
Projection: Transverse Mercator
Datum: OSGB 1936

Interest:
N/A

Location:
Billingham, Stockton-on-Tees, Tees Valley,
TS2 1TT

Coords: 457877, 521044

Scheme Name:
H2 Teesside

Drawing Name:
Information Plan

Drawing No: 22004379_PLN_INFO_549.9

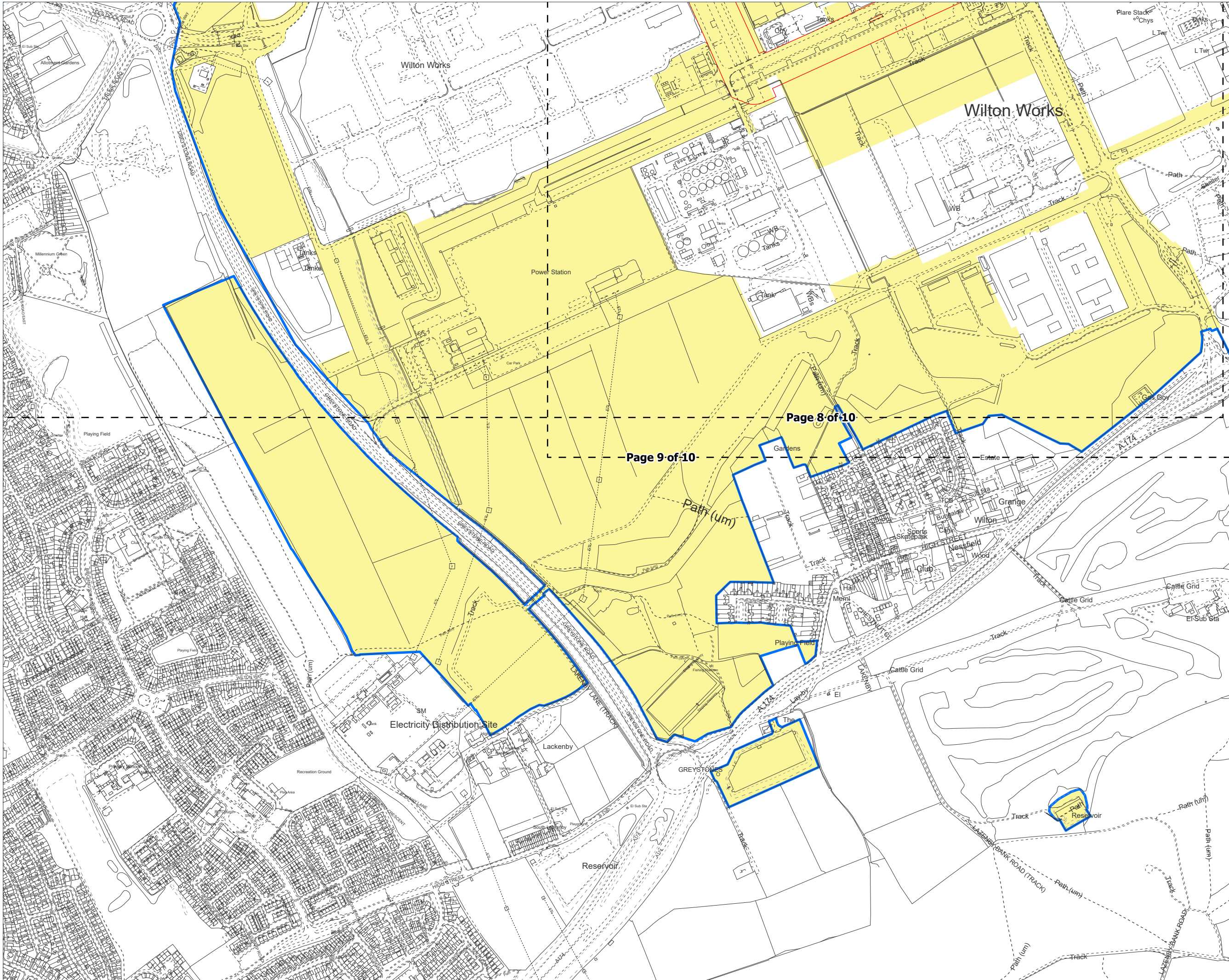
Rev	Date	Description
-	24.02.2025	First Issue

Drawn:	AL	
Approved:	PH	
Sheet No:	9 of 10	
Sheet Size:	A3	



The information contained in this document is confidential and protected by copyright. The use, copying or disclosure to a third party, either wholly or in part, except with the written permission of, and in the manner prescribed by BP Exploration Operating Company Limited constitutes an infringement of copyright. Dalcour Maclaren does not warrant that this document is definitive nor free of error and does not accept liability for any loss caused or arising from reliance upon information provided herein. Although our best efforts have been made to ensure the accuracy of these plans, all measurements must be confirmed on site. BASED UPON THE ORDNANCE SURVEY MAP WITH THE SANCTION OF THE CONTROLLER OF HM STATIONERY OFFICE. CROWN COPYRIGHT RESERVED. © OS LICENCE No. AC0000808122

Drawing Location: C:\Users\andrew.lambe\Documents\22004379_PLN_INFO_548.aprx
Geomatrics01 DM Plans\20250220_22004379_PLN_INFO_548\10250220_22004379_PLN_INFO_548.aprx



- Key:
- Semcorp Protection Corridor
 - Order Limits
 - Wilton Complex

Notes:

Coordinate System: British National Grid
Projection: Transverse Mercator
Datum: OSGB 1936

Interest:
N/A

Location:
Billingham, Stockton-on-Tees, Tees Valley,
TS2 1TT

Coords: 456702, 519912

Scheme Name:
H2 Teesside

Drawing Name:
Information Plan

Drawing No: 22004379_PLN_INFO_549.10

Rev	Date	Description
-	24.02.2025	First Issue

Drawn:	AL
Approved:	PH
Sheet No:	10 of 10
Sheet Size:	A3



The information contained in this document is confidential and protected by copyright. The use, copying or disclosure to a third party, either wholly or in part, except with the written permission of, and in the manner prescribed by BP Exploration Operating Company Limited constitutes an infringement of copyright. Dalcour Maclaren does not warrant that this document is definitive nor free of error and does not accept liability for any loss caused or arising from reliance upon information provided herein. Although our best efforts have been made to ensure the accuracy of these plans, all measurements must be confirmed on site. BASED UPON THE ORDINANCE SURVEY MAP WITH THE SANCTION OF THE CONTROLLER OF HM STATIONERY OFFICE. CROWN COPYRIGHT RESERVED. © OS LICENCE No. AC0000808122